



Split Mounting Hardware

**for use with MaTRx Series
Wheelchair Backs**

Table of Contents

- 1.0 Tools Required
- 2.0 Hardware Kit Contents
- 3.0 Before Installation - Important!
- 4.0 Hardware & MaTRx Back Installation
- 5.0 Notes



PLEASE NOTE

If you have any questions or concerns with the Split Mounting Hardware, or your MaTRx back installation, please contact our Customer Service Department for assistance.

Canada: 866-748-7943

USA: 888-433-6818

1.0 - Tools Required

Wrenches: 5/8" (16mm); 1/2" (13 mm)

Allen Keys: 3/32"; 1/8" (provided)

Utility Knife/Scissors

Phillips Screwdriver

Tape Measure/Ruler



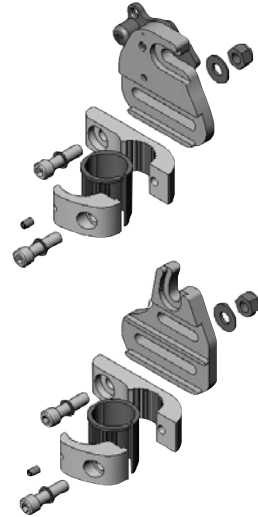
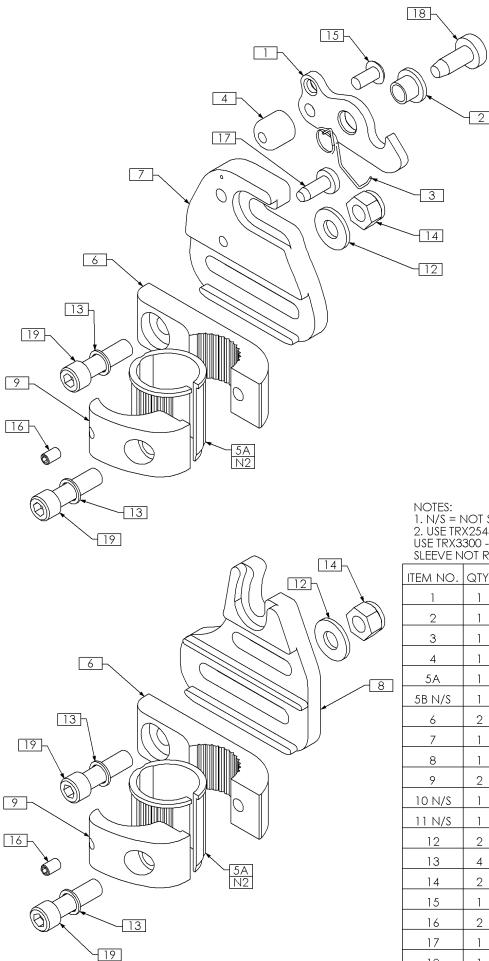
2.0 - Hardware Kit Contents

The **Split Mounting Hardware** has been uniquely designed to allow for mounting of our MaTRx Series wheelchair backs when a rigidizer bar is installed between the wheelchair's back canes. The easy to use split mounting hardware still maintains a high degree of adjustability, while effectively eliminating any interference issues experienced with our standard mounting hardware.

Note: the MaTRx Series includes: the MaTRx-PB (*Standard or Deep*) and the MaTRx-PB Elite Back (*the Split Hardware is **not** recommended for the MaTRx-PB Heavy Duty*)

Split Mounting Hardware Overview Drawing (Right Side)

Figure 1.0



NOTES:

1. N/S = NOT SHOWN
2. USE TRX2544 - CUT IN HALF, FOR ADAPTING TO 7/8" (22mm) TUBING.
- USE TRX3300 - CUT IN HALF, FOR ADAPTING TO 3/4" (19mm) TUBING. ADAPTER SLEEVE NOT REQUIRED FOR 1" (26mm) TUBING

ITEM NO.	QTY.	PART NO.	DESCRIPTION
1	1	TRX1892	LATCH
2	1	TRX1893	LATCH SPRING SLEEVE
3	1	TRX1894	LATCH SPRING, RIGHT
4	1	TRX1897	LATCH STOP
5A	1	TRX2544	BACK CANE ADAPTOR SLEEVE, 7/8
5B N/S	1	TRX3300	BACK CANE ADAPTOR SLEEVE, 3/4
6	2	TRX4291	COMPACT CLAMP A
7	1	TRX4294	TOP PLATE, RT
8	1	TRX4418	BOTTOM PLATE, RT
9	2	TRX4800	CLAMP
10 N/S	1	TRM0699	1/8" HEX KEY
11 N/S	1	TRM0700	3/32" HEX KEY
12	2	TRH0101	1/2" FLAT WASHER
13	4	TRH0143	0.281" x 3/8"OD x 0.031" TH FLAT WASHER
14	2	TRH0201	1/4-20 NYLOC NUT
15	1	TRH0475	#10-32 x 3/8" BUTTON SOCKET CAP SCREW
16	2	TRH0501	#10-32 x 1/4" HEX SOCKET SET SCREW
17	1	TRH0548	#10 x 1/2" PAN TORX PLASTITE SCREW
18	1	TRH0549	M6 x 16 CHEESE POSIDRIVE TAP TITE SCREW
19	4	TRH0553	1/4-20 x 7/8" SOCKET HEAD CAP SCREW GR8

(Note: Right Ass'y Shown)

3.0 - Before Installation- Important!

Mounting Plate Configurations:

SEAT DEPTH (Fore/Aft Adjustment):

The **Cane Clamp Kits** may be mounted in a *forward* or *rearward* position on the back canes. The cane clamp assemblies are shipped in the *rearward* mounting configuration- see **Figure 2A** below. This maximizes the seat depth on the wheelchair seat (up to 2.5" (64mm) maximum rearward offset).

By *inverting* the cane clamps on the back canes, the assembly can be reconfigured to give a more *forward* mounting position* (up to a maximum 2.5" (64mm) forward offset - see **Figure 2B** below).

**note: in the forward position, the mounting plates must also be removed and reinstalled in the proper orientation - as indicated below.*

The slots in the upper and lower mounting plates, also provide up to 1.5" (38mm) of fore and aft adjustment relative to the cane clamp.

! PLEASE NOTE

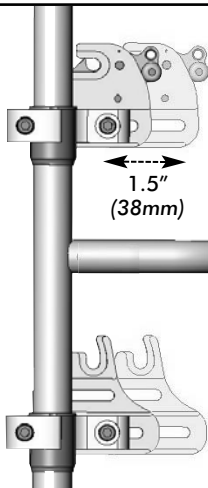
When establishing the mounting position for the MaTRx back, ensure the stability of the wheelchair is not compromised.

Adjusting the fore and aft position of the backrest will alter the user's center of gravity within the wheelchair. A recessed back position can significantly reduce the rearward stability of the wheelchair. Similarly, a more forward back position will reduce the wheelchair's forward stability.

Figure 2A

(Left Ass'y
Shown)

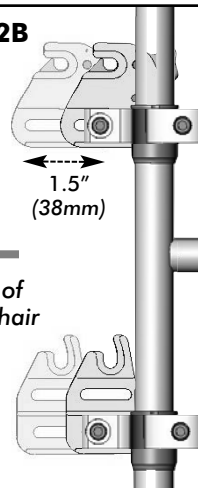
←
Front of
wheelchair



Mounting Plates in the **rear most** back position (maximized seat depth).

Figure 2B

←
Front of
wheelchair



Mounting Plates in the **forward most** back position.

4.0 Hardware and MaTRx Back Installation

i Important! Prior to installation, ensure the **left** and **right** mounting plates are in the proper orientation and secured to the back canes at the same height.

i Important! To function effectively and provide proper support, all MaTRx backs should be centered between the back canes.

Installation Instructions:

- 1 Remove existing wheelchair back upholstery (if applicable).
- 2 Establish the desired cane clamp/mounting plate seat depth configuration for the end user (as per **Section 3.0**).
- 3 Loosen the screws on the **Lower Cane Clamp** ass'y and loosely install the clamps (with mounting brackets) onto each back cane. *(Install plastic inserts if required).*
- 4 Starting with the **left*** back cane, position/slide the Lower Cane Clamp to the desired height and tighten the clamp screws enough to hold it in place. *(Clamps can be fully tightened after the back is installed and all final adjustments have been made.)*
- 5 From a fixed point on the wheelchair measure the exact height of the *installed* Cane Clamp assembly, and install the second Cane Clamp at the **same height** on the **right*** back cane. Ensure the Cane Clamps/Mounting Plates are also mounted **parallel** with each other.
- 6 With the lower cane clamp assemblies installed, loosen the screws on the **Upper Cane Clamp** assemblies and install the clamps (with mounting brackets) loosely onto each back cane- approximately 7" (18cm) above the lower clamp ass'y. *(Install plastic inserts if required).* *(Clamps can be fully tightened after the MaTRx back is installed and all final adjustments have been made.)*
- 7 To install the MaTRx-PB elite back onto the mounting plates:

Step 1: Slide the lower mounting pins from the MaTRx back into the notch in the top of the lower mounting plates

Step 2: With the lower pins in place, adjust the height of the upper cane clamp ass'y as needed so that the upper pins (on the MaTRx back) lock/snap into the latch mechanism of the Upper Mounting Plates.

- 8 With the Split Mounting Hardware (upper and lower clamp ass'y) properly adjusted, fully tighten all clamp assembly hardware.
- 9 The mounting pins for the MaTRx back may require adjustment to ensure the backrest is properly fitted/secured to the wheelchair.; For instructions on adjusting the mounting pins, please refer to the installation manual provided with the MaTRx Series back.

***note:** refer to **Figure 3.0** to confirm proper mounting plate orientation.

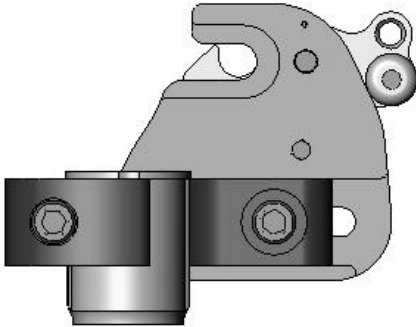
4.0 Hardware and MaTRx Back Installation

i Important! the *left* & *right* mounting plate assemblies shown below are defined from a seated position in the wheelchair (i.e.; *forward facing position*).

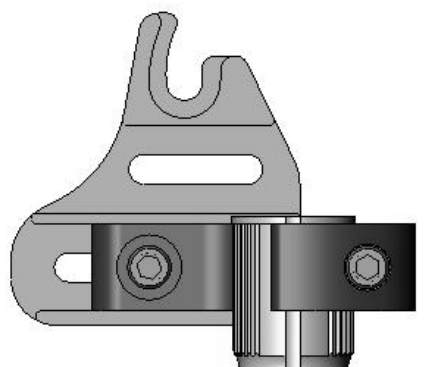
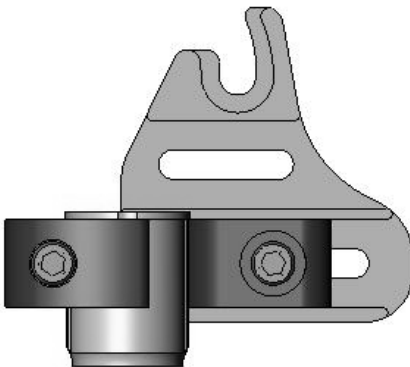
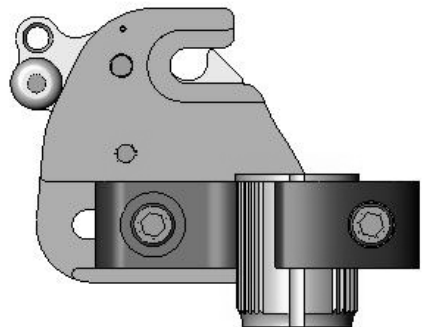
Split Mounting Hardware Profile (*Left & Right Assemblies*)

Figure 3.0

Left Mounting Plates



Right Mounting Plates



5.0 - NOTES



www.motionconcepts.com
info@motionconcepts.com

USA

700 Ensminger Rd. Suite 112
Tonawanda, NY 14150
Toll Free Tel: 1.888.433.6818
Toll Free Fax: 1.888.433.6834

Canada

84 Citation Drive
Concord, Ontario L4K 3C1
Tel: 905.695.0134
Fax: 905.695.0138

