



Distributed in New Zealand by C1 South Ltd

## Shaped to Support Your Every Move

The **nxt** Back Support Series provides a range of models, shapes and contours to provide posterior, posterior lateral and posterior deep lateral support. The scapular cut out shape is designed to provide excellent support and comfort while enhancing the users natural range of motion. For optimal positioning of the pelvis, pelvic support pads can be uniquely positioned to customise the fit for the user. The wide range of sizes and contours provides exceptional choice for support and comfort.

**nxt**  
SEATING SERIES  
AC BACK

[Active Contour]



**nxt**  
SEATING SERIES  
SC BACK

[Support Contour]



**nxt**  
SEATING SERIES  
PC BACK

[Plus Contour]



Adjustable Lateral Support Pads  
[Can be used when extra support needed]



Adjustable Pelvic-Lumbar Supports  
[For optimal pelvic positioning]



**C1SOUTH**

0800 212333 email: [info@c1south.co.nz](mailto:info@c1south.co.nz)

[www.c1south.co.nz](http://www.c1south.co.nz)



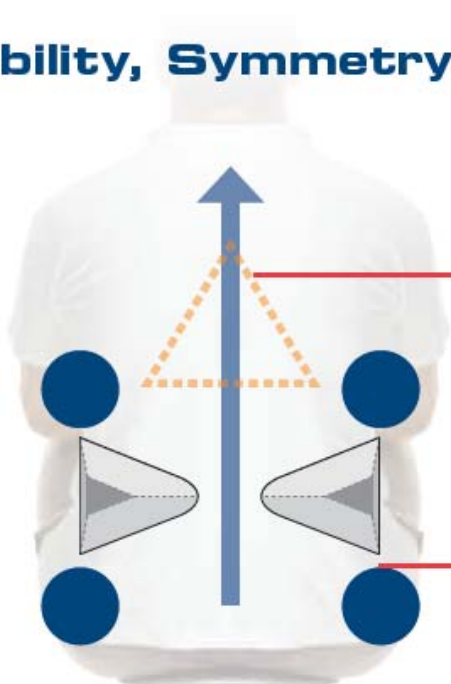
**FHBACK**

Comes in back heights of 12", 16" and 20".

## Fixed Height

- **AC Back [Active Contour]** has a gentle 3"-7.6cm contour that provides excellent postural support that is ideal for the active user who wants style, comfort & support
- **SC Back [Support Contour]** has a 5"-12.7cm contour for optimal midline support & positioning that is ideal for users who need mid to upper thoracic or in-scapula support & excellent posterior lateral support
- **PC Back [Plus Contour]** has a deep 7"-17.8cm contour for optimal midline support & positioning with extra lateral support. Ideal for users who need mid to upper thoracic or shoulder height support & excellent posterior lateral support
- Breathable, moisture resistant washable spacer fabric cover with "Silverplus" antimicrobial protection
- 300lbs-136.1kg weight capacity

## Stability, Symmetry & Shoulder Freedom



**nxt** Backs, support the Spinal Column within the "Scapula Triangle" which improves shoulder freedom and head control

**nxt** Backs provide support to the side of the pelvis and thorax to stabilize the entire spinal column

**Adjustable Laterals**  
[Bend to adjust position]

**Low Pelvic Pivot Point**  
[Can be pivoted around the pelvis]

**Angle Adjustment**  
[50° back angle adjustment]

**Quick Release**  
[One hand quick release]







16" - 22" wide



16" - 22" wide



16" - 22" wide

## HA<sub>BACK</sub>

### Height Adjustable

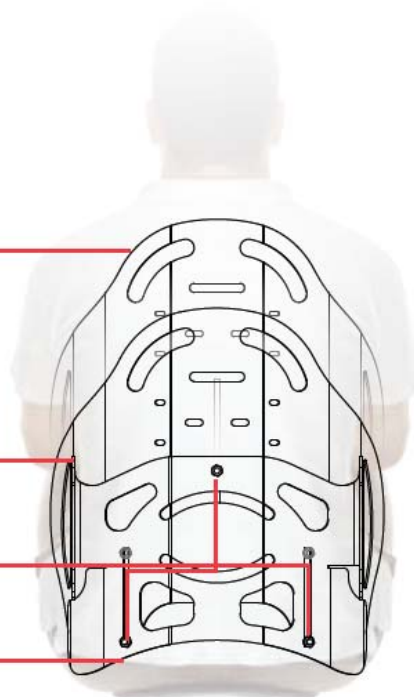
- All HA Backs are adjustable in height from 16"-40.6cm to 20"-50.8cm steplessly and easily
- HA AC Back has a 3.5"-8.9cm lateral contour for excellent postural support
- HA SC Back has a 4.75"-12.1cm lateral contour for optimal midline support and positioning
- HA PC Back has a 6"-15.2cm deep lateral contour for optimal midline support & positioning
- Laterals can be bent in independently by hand for a unique fit
- Breathable, moisture resistant washable spacer fabric cover with "Silverplus" antimicrobial protection
- 300lbs-136.1kg weight capacity

Upper Section of HA Back can be adjusted up or down to support the thorax & position the laterals for superior trunk support

Lower Section of HA Back is positioned to control and support pelvis

Height adjustment nuts

Pelvic Positioning Cutout



**Height Adjustable**  
[Adjusts steplessly and easily]

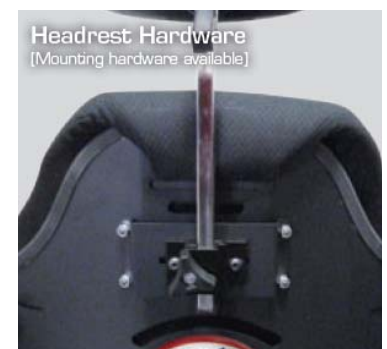


**Positioning Cutout** — on HA & VC Backs  
[Provides room to position the pelvis & sacrum for balancing the spinal column]



## Quickfit™ Mounting Hardware

- Quick and easy to adjust while client is in the chair
- 50 degrees of angle adjustment
- 5"-12.7cm of depth adjustment, 2.5"-6.4cm in front & 2.5"-6.4cm behind back canes
- Fits metric and imperial tubing including, 1"-2.5cm, 7/8"-2.2cm or 3/4"-1.9cm back canes without shims
- Clamps open wide for installation/removal without taking them apart
- New Quickfit Multi-clamp allows clamp to be installed where a smaller tube is inserted into a larger tube (ie. 3/4"-1.9cm inside a 1"-2.5cm)
- Fits 3 widths of chair by adjusting the mounting pins (ie. 16" back fits 16", 17" & 18" chairs)
- Provides rotation adjustment for pelvic or trunk rotation
- One hand quick release for easy removal to fold chair or transport



### nxt Height Adjustable Back: All adjust 16" - 20" high

Code	Width	Contour	Fits wh/ch widths
NHAACB16	16"	3.5"	16" - 17"
NHASCB16	16"	4.75"	16" - 17"
NHAPCB16	16"	6"	16" - 17"
NHAACB18	18"	3.5"	18" - 19"
NHASCB18	18"	4.75"	18" - 19"
NHAPCB18	18"	6"	18" - 19"
NHAACB20	20"	3.5"	20" - 21"
NHASCB20	20"	4.75"	20" - 21"
NHAPCB20	20"	6"	20" - 21"
NHAACB22	22"	3.5"	22" - 23"
NHASCB22	22"	4.75"	22" - 23"
NHAPCB22	22"	6"	22" - 23"

### nxt Active Contour Back: 3" Contour depth

Code	Width	Height	Fits wh/ch widths
NACB1512	15"	12"	15" - 16"
NACB1516	15"	16"	15" - 16"
NACB1520	15"	20"	15" - 16"
NACB1612	16"	12"	16" - 17"
NACB1616	16"	16"	16" - 17"
NACB1620	16"	20"	16" - 17"
NACB1812	18"	12"	18" - 19"
NACB1816	18"	16"	18" - 19"
NACB1820	18"	20"	18" - 19"
NACB2016	20"	16"	20" - 21"
NACB2020	20"	20"	20" - 21"

### nxt Support Contour Back: 5" Contour depth

Code	Width	Height	Fits wh/ch widths
NSCB1612	16"	12"	16" - 17"
NSCB1616	16"	16"	16" - 17"
NSCB1620	16"	20"	16" - 17"
NSCB1812	18"	12"	18" - 19"
NSCB1816	18"	16"	18" - 19"
NSCB1820	18"	20"	18" - 19"
NSCB2016	20"	16"	20" - 21"
NSCB2020	20"	20"	20" - 21"

### nxt Plus Contour Back: 7" Contour depth

Code	Width	Height	Fits wh/ch widths
NPCB1612	16"	12"	16" - 17"
NPCB1616	16"	16"	16" - 17"
NPCB1620	16"	20"	16" - 17"
NPCB1812	18"	12"	18" - 19"
NPCB1816	18"	16"	18" - 19"
NPCB1820	18"	20"	18" - 19"
NPCB2016	20"	16"	20" - 21"
NPCB2020	20"	20"	20" - 21"

**Warranty:** The **nxt** Back Support Series is manufactured with great care and with a focus on quality and function. Each back comes with a two year warranty against manufacturers defects from the date of purchase. C1 South in conjunction with Dynamic Health Care Solutions reserves the right to repair or replace it free of charge. The warranty does not apply to normal wear and tear, use of product in a way that it was not designed for, burns, punctures or tears to the outer cover.