

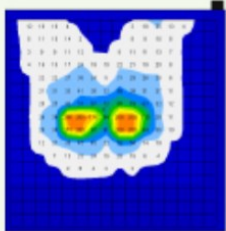


Shear Comfort Cushion-It

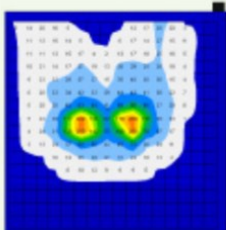


The Cushion-It is a medical grade sheepskin overlay designed to attach to a chair seat or back for enhanced comfort. It is particularly beneficial when placed over an existing wheelchair cushion for superior skin and pressure care, while improving the overall feel and effectiveness of the cushion. Ideal for office chairs, armchairs, car seats and more. Features adjustable Velcro straps that can be fastened underneath a cushion, seat or chair back to secure it in place.

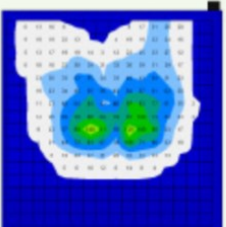
The Cushion-It provides pressure redistribution and allows greater freedom of movement by avoiding the uncomfortable friction and shear associated with other cushion covers. It also wicks perspiration for enhanced comfort and skin protection. Measures 46cm x 55cm - making it ideal for cushions 16" to 20", although customisation for smaller sizes is available. Blue only.



Seated on a hard surface



Seated on a 700GSM artificial sheepskin



Seated on a Shear Comfort XD1900

Shear Comfort XD1900

Shear Comfort products by Healthcare Innovations Australia incorporate Australian Medical Sheepskins and XD1900, an innovative and advanced woven wool product.

XD1900 has an extra high density of 1900gsm and 30mm pile for superior pressure redistribution. Even the best natural sheepskins only range from 300-500gsm.

Shear Comfort utilises the natural properties of wool to distribute pressure, dissipate heat and water vapour for microclimate control, and reduce friction and shear making it a good skin interface. The wool density also contributes to improved comfort.

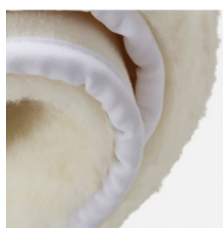
XD1900 is fabric-backed, not leather, making it easy to care for. It can be washed at hot temperatures up to 80°C to effectively kill bacteria without deterioration (or causing shrinkage) for up to 50 washes, unlike other wool products.



Shear Comfort Mattress Overlay



The **Shear Comfort Mattress Overlay** is a sheepskin overlay designed to alleviate pain and discomfort caused by high pressure between the skin and the mattress. It provides microclimate control, improved sleep quality and pressure care to relieve the skin and joints for a more comfortable sleep. Available in standard NZ Single (92cm x 187cm) or Queen (150cm x 200cm) bed size. White only.



Shear Comfort Day Chair Overlay

The Shear Comfort Day Chair Overlay is a sheepskin overlay designed to enhance comfort in a chair, sofa or car seat. It can also be used to provide targeted protection in bed.

Beneficial for those at risk when seated for an extended length of time. Features adjustable straps for a secure fit. Measures 50cm x 140cm. Blue only.



Shear Comfort Targeted Protectors

